

Span Notes



No. 3

Direct Application of Pad and Carpet Over Spancrete® Saves Time and Money

In buildings having Spancrete floors, pad and carpet can be installed quickly and inexpensively. This is possible because the pad can be laid directly over the plank without first applying concrete toppings or other expensive surface treatments. Eliminating topping materials saves both time and money. The direct application of pad and carpet has been successful on millions of square feet of Spancrete floor systems worldwide.

The direct application of pad and carpet is possible because the unique Spancrete manufacturing process produces high quality, machine-troweled hollowcore planks which have a uniform top surface. Spancrete is manufactured to rigid PCI tolerances, and quality control standards are strictly enforced under factory conditions.

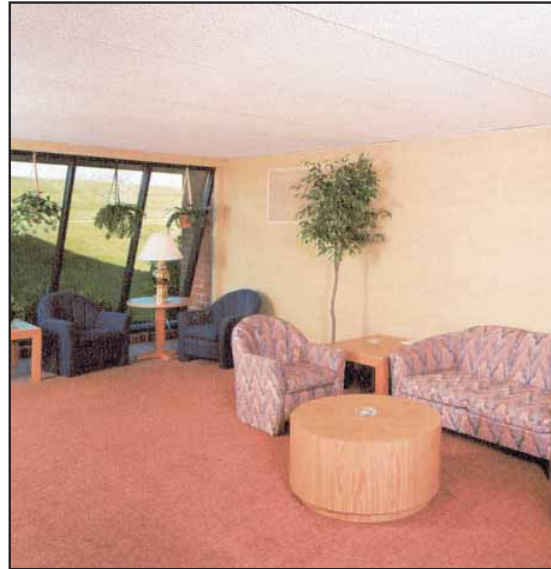
Individual project design requirements may affect the feasibility of applying pad and carpet direct. The following are important items to consider:

- The General Contractor must provide true, smooth, and level plank bearing surfaces.
- Installation of Spancrete should be performed by experienced personnel using proper leveling and grouting techniques.
- Differential heights between adjacent plank should be feathered with grout or some other suitable material.
- The use of a durable non-integral pad of sufficient weight is required.
- Untopped Spancrete floor slabs are not suitable for direct application of tile, vinyl floor covering or carpeting without pad.



- Special preparation is normally performed by the flooring subcontractor.

Consult your local Spancrete manufacturer for additional information, or to determine the feasibility of direct application of pad and carpet for your project.



Spancrete Manufacturers' Association, Providing Quality Worldwide

EAST

Oldcastle Precast, Inc.
South Bethlehem, New York

Oldcastle Precast, Inc.
Manchester, New York

Conewago Precast Building Systems
Div. of Conewago Building Systems, LLC.
Hanover, Pennsylvania

MIDWEST

Spancrete, Inc.
Green Bay, Wisconsin

Spancrete Industries, Inc.
Waukesha, Wisconsin

Hanson Structural Precast Midwest, Inc.
Maple Grove, Minnesota

Spancrete of Illinois, Inc.
Arlington Heights, Illinois

WEST

Hanson Structural Precast Pacific, Inc.
Irwindale, California

KIE-CON
Div. of Kiewitt Pacific Co.
Antioch, California

Owell Precast
Sandy, Utah

SOUTHWEST

Gate Concrete Products Co.
Pearland, Texas

Manco Structures, Ltd.
Schertz, Texas

SOUTH

Cement Industries, Inc.
Fort Myers, Florida

Gate Concrete Products Co.
Jacksonville, Florida

CANADA

Burnco Concrete Products Ltd.
Calgary, Canada

ISRAEL

Spancrete of Israel
Palmachim, Israel

MEXICO

ITISA
Mexico City, Mexico

Spancrete Noreste
Monterrey, Mexico

TURKEY

Yapi-Merkezi
Camlica-Istanbul, Turkey

CARIBBEAN

Preconco Limited
Barbados, West Indies

Spancrete Caribbean, Ltd.
Trinidad, West Indies

MACHINE MANUFACTURER

Spancrete Machinery Corporation
Waukesha, Wisconsin

Spancrete is also manufactured in

Armenia
Australia
Belgium
Brazil
China
Denmark
Egypt
Guatemala

Hungary
Ireland
Japan
South Korea
Spain
Switzerland
UAE

Spancrete Industries, Inc.
N16 W23415 Stoneridge Drive
Waukesha, WI 53188
P.O. Box 828
Waukesha, WI 53187
Telephone: (414) 290-9000
Fax: (414) 290-9125

Spancrete, Inc.
2448 Century Road
Green Bay, WI 54307-0508
P.O. Box 10508
Green Bay, WI 54303
Telephone: (920) 494-0274
Fax: (920) 494-7901

Spancrete of Illinois, Inc.
Arlington Place One Building
2340 S. Arlington Heights Rd.
Suite #520
Arlington Heights, IL 60005
Telephone: (847) 879-2100
Fax: (847) 879-2105



MKSMASN Rev.3-06