

Span Notes



No. 1

Attractive Ceilings Are Easy With Spancrete®

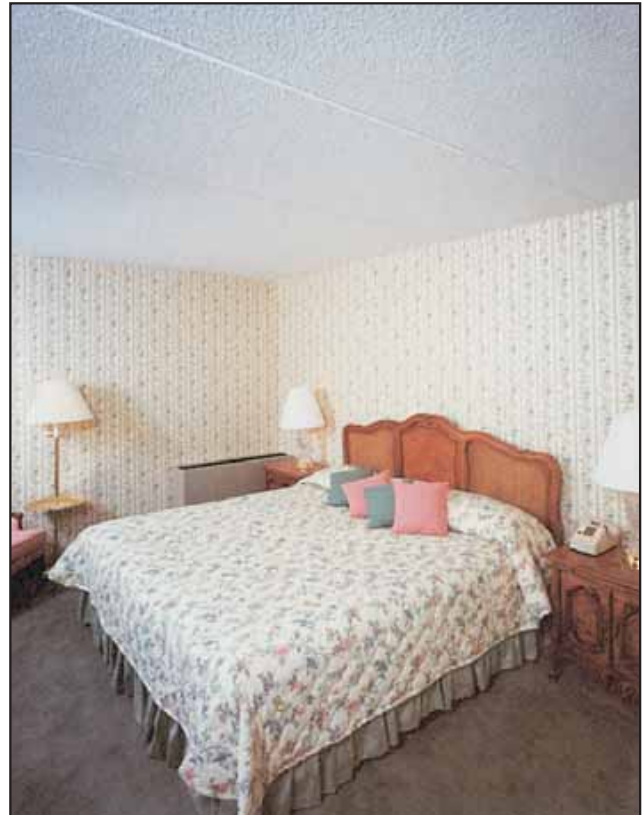
Texturing of concrete ceilings is a common practice nationwide. There are millions of square feet of textured Spancrete ceilings throughout the United States.

There is a wide variety of high quality textures available from many reliable manufacturers. Many of these textures are manufactured specifically to cover structural concrete.

Spancrete planks, as removed from the casting beds, have bottoms with a block-like texture. This provides an excellent bonding surface for sprayed-on textures. Attractive, uniform ceilings can be produced economically by applying textured finish to the plank.

The following are items which should be considered in preparing texturing specifications:

- Like any other building material, Spancrete plank should be clean, dry, and sound prior to applying texture.
- Small chips and spalls should be properly patched by the texture applicator. Large chips and spalls are the responsibility of the plank erector.
- The V-groove joints between the Spancrete plank provide a desirable pattern, and in some areas of the country are not filled or caulked.
- Texture manufacturers have various recommendations for the application of their products. Many of them require spraying, troweling, or rolling of a specific primer prior to applying the texture.
- The primer and spray texture both should be mixed in strict accordance with the manufacturer's instructions. Proper mixing affects such things as stability, sprayability, wet and dry bond, hiding ability, coverage, hardness, crack resistance, etc.
- The texture should be applied by an experienced applicator using the proper equipment, as recommended by the manufacturer.
- Spread rate is extremely important. Most manufacturers caution about problems created by excessive or insufficient coating.
- You may want to identify a small room or area for test application of one or more textures prior to starting the job. This will allow you to check for proper coverage, texture, discoloration, adhesion and other concerns.





Spancrete Manufacturers' Association, Providing Quality Worldwide

EAST

Oldcastle Precast, Inc.
South Bethlehem, New York

Oldcastle Precast, Inc.
Manchester, New York

Conewago Precast Building Systems
Div. of Conewago Building Systems, LLC.
Hanover, Pennsylvania

MIDWEST

Spancrete, Inc.
Green Bay, Wisconsin

Spancrete Industries, Inc.
Waukesha, Wisconsin

Hanson Structural Precast Midwest, Inc.
Maple Grove, Minnesota

Spancrete of Illinois, Inc.
Arlington Heights, Illinois

WEST

Hanson Structural Precast Pacific, Inc.
Irwindale, California

KIE-CON
Div. of Kiewitt Pacific Co.
Antioch, California

Owell Precast
Sandy, Utah

SOUTHWEST

Gate Concrete Products Co.
Pearland, Texas

Manco Structures, Ltd.
Schertz, Texas

SOUTH

Cement Industries, Inc.
Fort Myers, Florida

Gate Concrete Products Co.
Jacksonville, Florida

CANADA

Burnco Concrete Products Ltd.
Calgary, Canada

ISRAEL

Spancrete of Israel
Palmachim, Israel

MEXICO

ITISA
Mexico City, Mexico

Spancrete Noreste
Monterrey, Mexico

TURKEY

Yapi-Merkezi
Camlica-Istanbul, Turkey

CARIBBEAN

Preconco Limited
Barbados, West Indies

Spancrete Caribbean, Ltd.
Trinidad, West Indies

MACHINE MANUFACTURER

Spancrete Machinery Corporation
Waukesha, Wisconsin

Spancrete is also manufactured in

Armenia
Australia
Belgium
Brazil
China
Denmark
Egypt
Guatemala

Hungary
Ireland
Japan
South Korea
Spain
Switzerland
UAE

Spancrete Industries, Inc.
N16 W23415 Stoneridge Drive
Waukesha, WI 53188
P.O. Box 828
Waukesha, WI 53187
Telephone: (414) 290-9000
Fax: (414) 290-9125

Spancrete, Inc.
2448 Century Road
Green Bay, WI 54307-0508
P.O. Box 10508
Green Bay, WI 54303
Telephone: (920) 494-0274
Fax: (920) 494-7901

Spancrete of Illinois, Inc.
Arlington Place One Building
2340 S. Arlington Heights Rd.
Suite #520
Arlington Heights, IL 60005
Telephone: (847) 879-2100
Fax: (847) 879-2105

